

## Columns and Beams (Commercial)



- Single & double height designs
- Beveled / chamfered edges
- Corbels & ledges





## Columns and Beams (Commercial)



- Varying footprints and size to suit structure
- Cast in plates as per design
- Pass thru holes in beams for sprinkler pipes





## Columns and Beams (Agricultural)

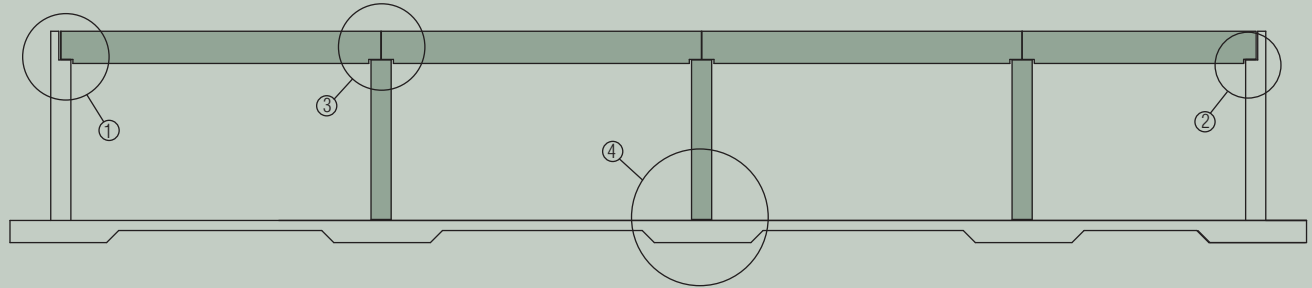


- Fast installation
- Steel form finish
- 6000 P.S.I. H.S.F. concrete
- Stainless steel connections

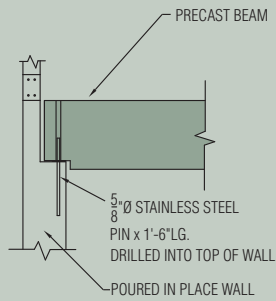




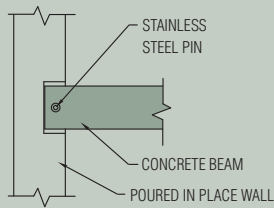
# Columns and Beams (Agricultural)



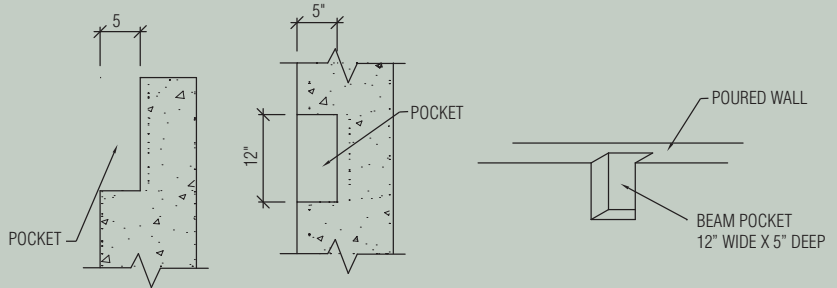
Barn Cross Section



SECTION

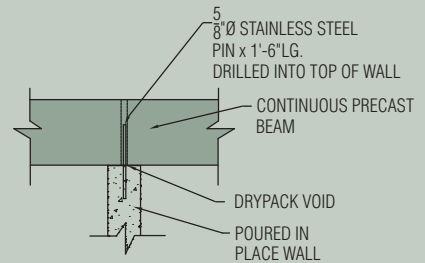
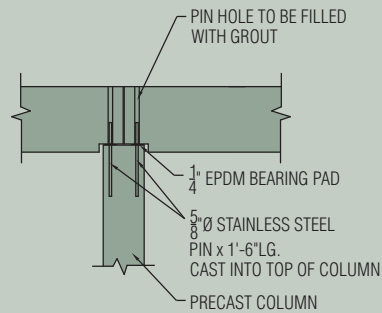


TOP PLAN VIEW



2

Typical Beam Pocket at Wall

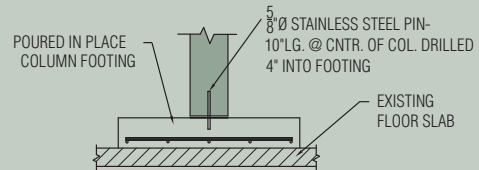
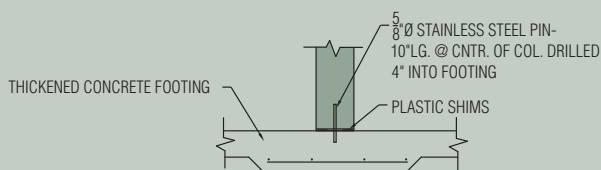


1

Typical Beam Pocket Connection

3

Continuous Beam Support

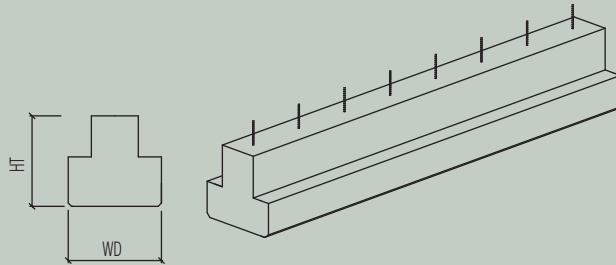


4

New Construction

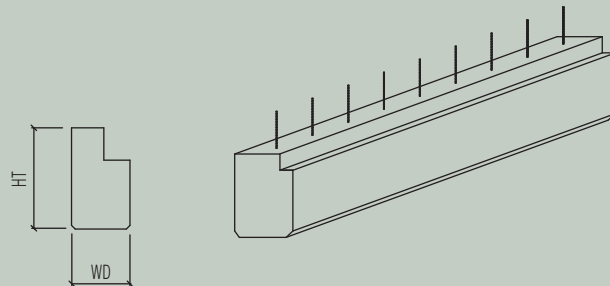
Existing Construction

# Columns and Beams



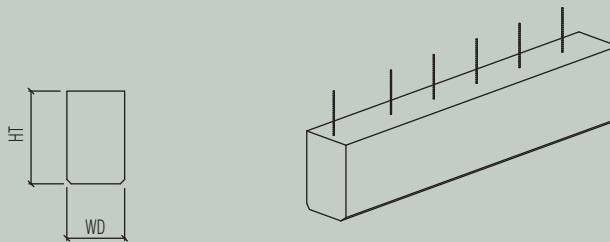
**TEE**

TEE-Beam



**ELL**

ELL-Beam



**RECT**

Rectangular-Beam

SIZES & CONFIGURATION VARIES ON DESIGN REQUIREMENTS.  
CONSULT STUBBE'S PRECAST FOR ADDITIONAL INFORMATION.  
ALL DETAILS & CONNECTIONS ARE INTERCHANGEABLE.

HT - HEIGHT  
WD - WIDTH

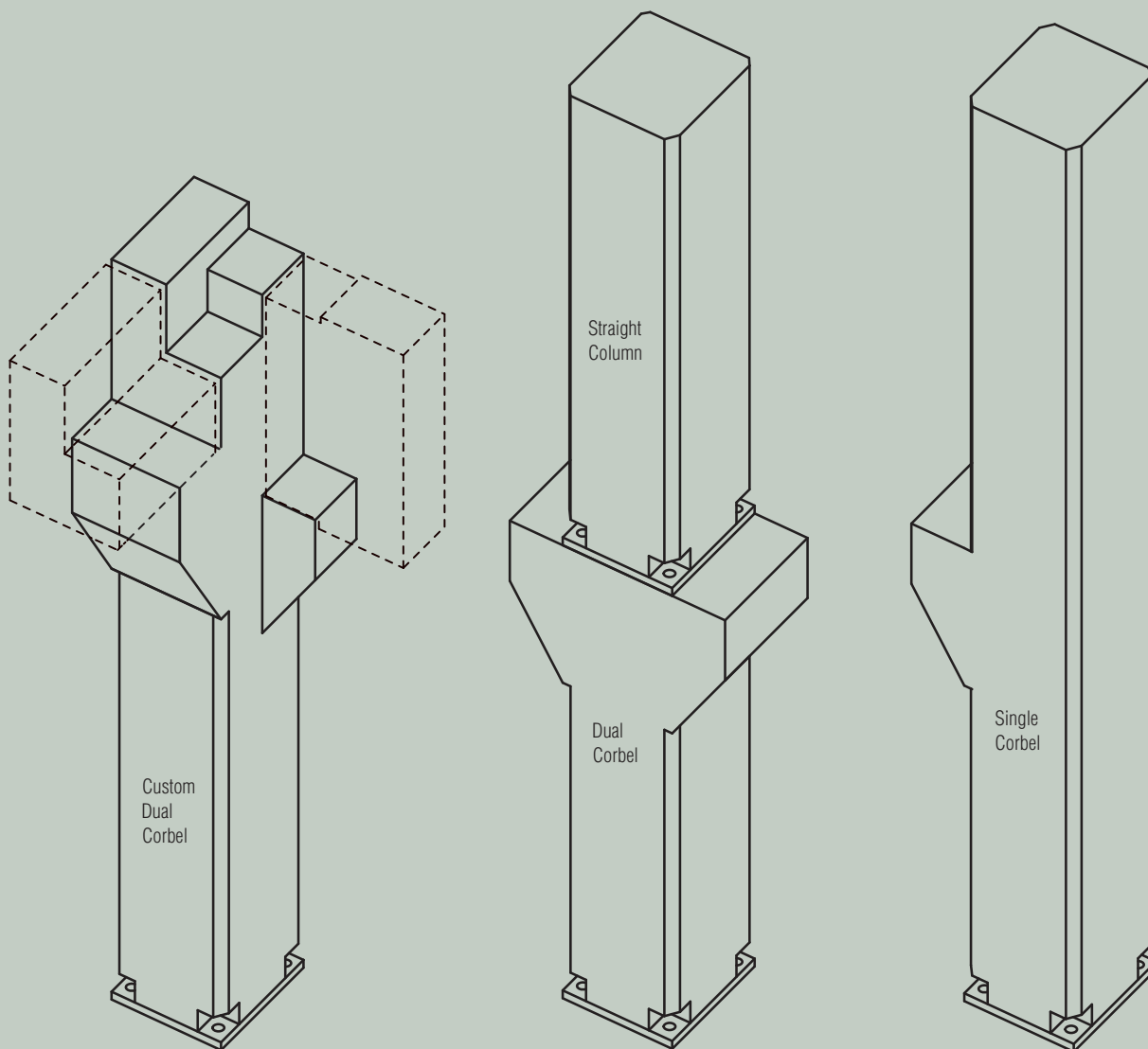
**MISC.**

Notes

# Columns and Beams



- CUSTOM SIZED COLUMNS AVAILABLE
- CONSULT STUBBE'S PRECAST FOR ADDITIONAL INFORMATION

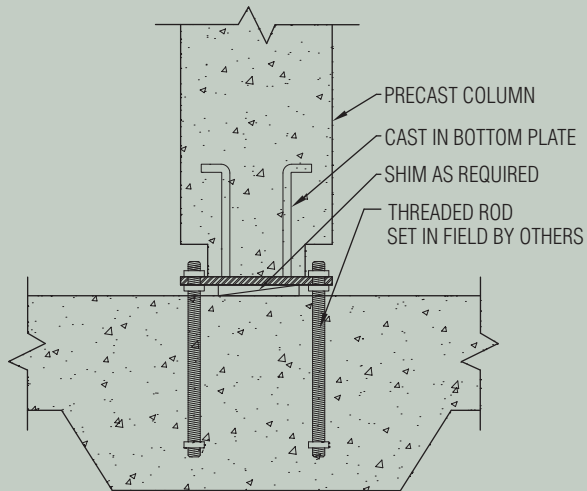


Corner Column (with beams)

Stacked Column

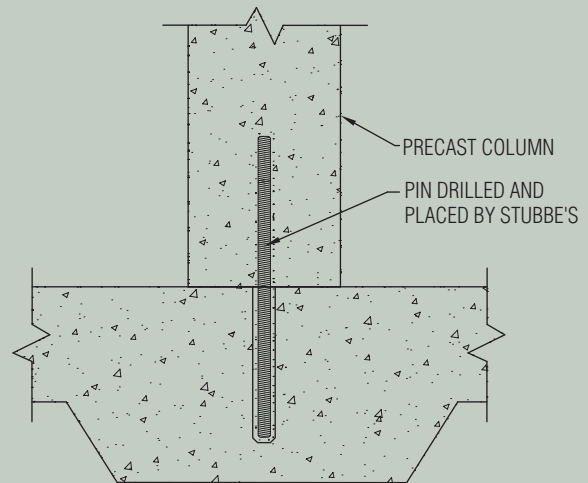
Extended Column

# Columns and Beams Details



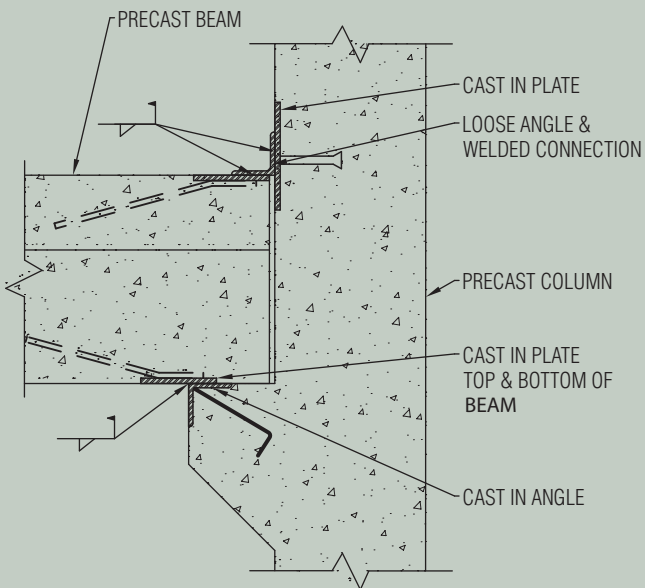
**CB1**

Bolted Column Base Connection



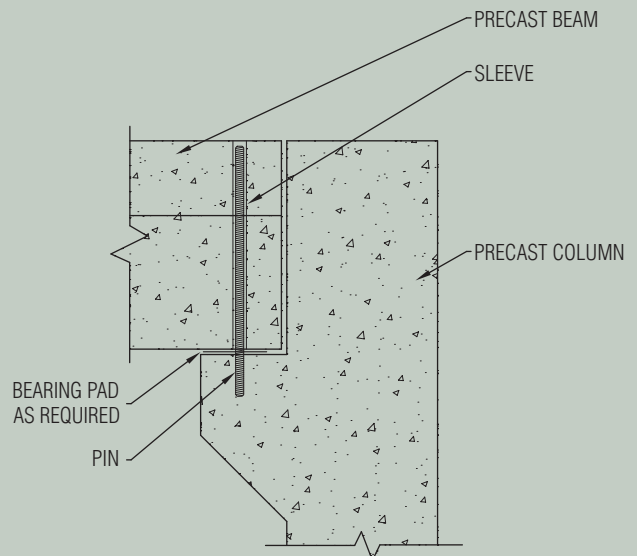
**CB2**

Single Pin Column Base Connection



**CB3**

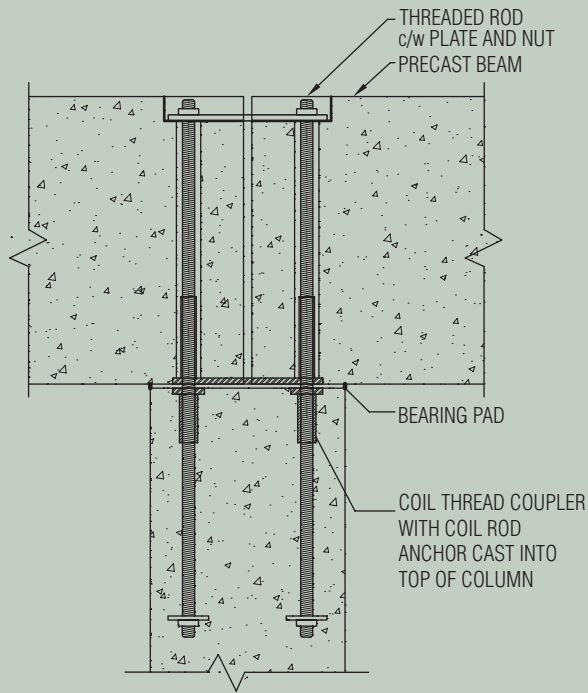
Beam to Column Welded Connection



**CB4**

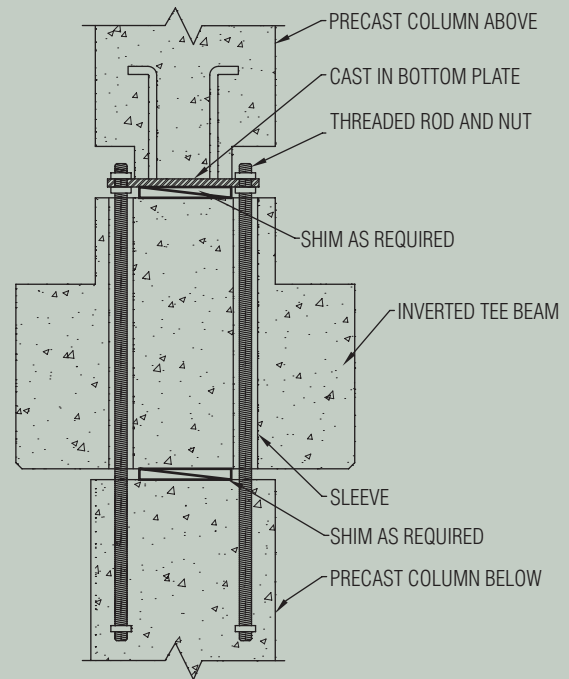
Beam to Column Pin Connection

# Columns and Beams Details



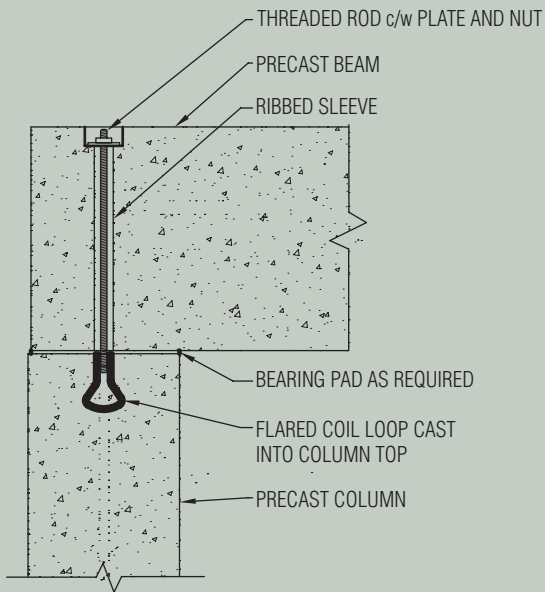
**CB5**

End to end beam and column connection



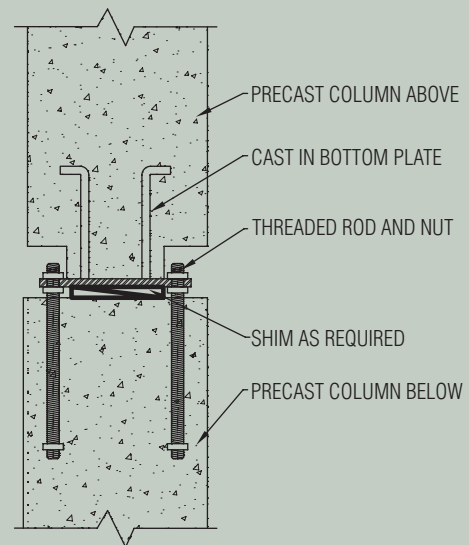
**CB6**

Column to Column Through Beam Connection



**CB7**

Bolted Beam Column Connection



**CB8**

Column to Column Stacked Connection